

# Micro Block

---

The following alphabets contain:

Letters: A through Z (uppercase)

Numerals: 0 through 9

Punctuation and Symbols: "!?;:-, '&/#

- short stitches off

- use "lock stitches on" or "auto lock" for letters larger than .25"

File: ML0038

Minimum and Maximum sizes are below

Recommended parameters:

- 3.7 to 4.5 density
- 12pt to 25pt stitch length
- letter width (EDSII/III, -20 to +20) EDS IV, 80% to 120%
- column width (EDS II/III, 0 to +2) EDS IV, 100% to 120%

By entering capital letters, letters will exit at top.

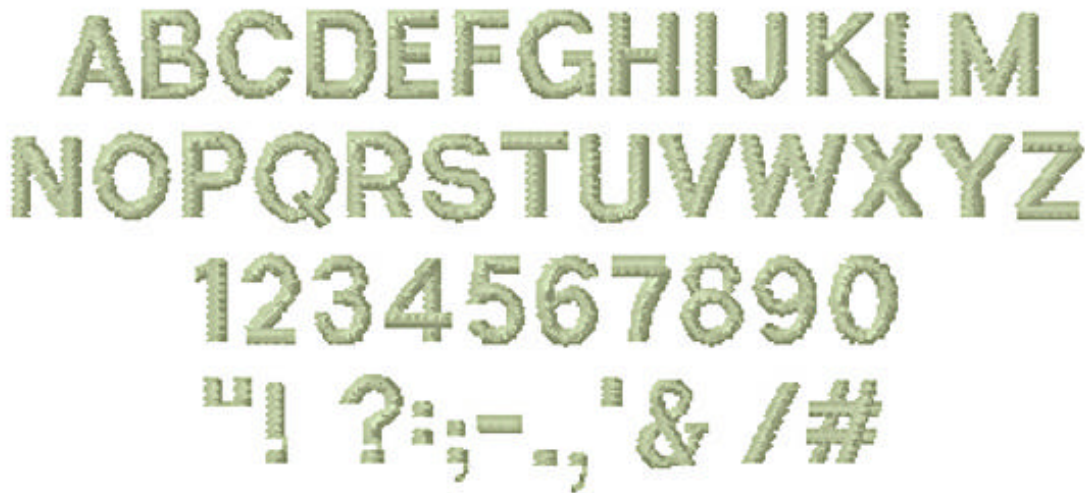
By entering lowercase letters, letters will exit at bottom.

By combining capital and lowercase letters you can create words that connect closely and require little or no hand trimming finish work.

Example:

TournameNt

The first "T" exists close to the "o" and the second "N" exists at the top ready to start the second "t".



Sizes: .18" to .35"